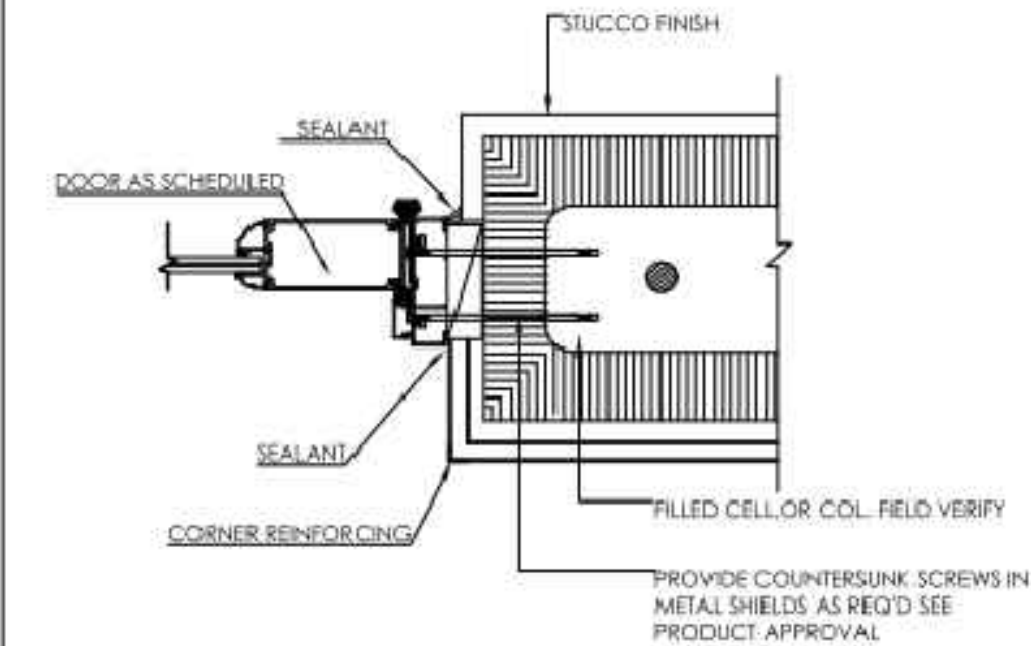
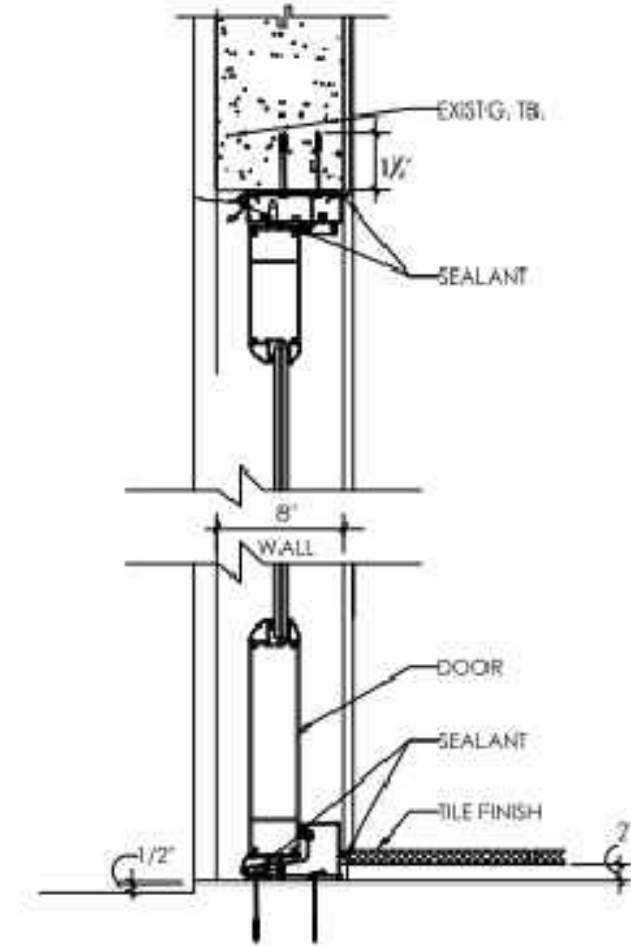


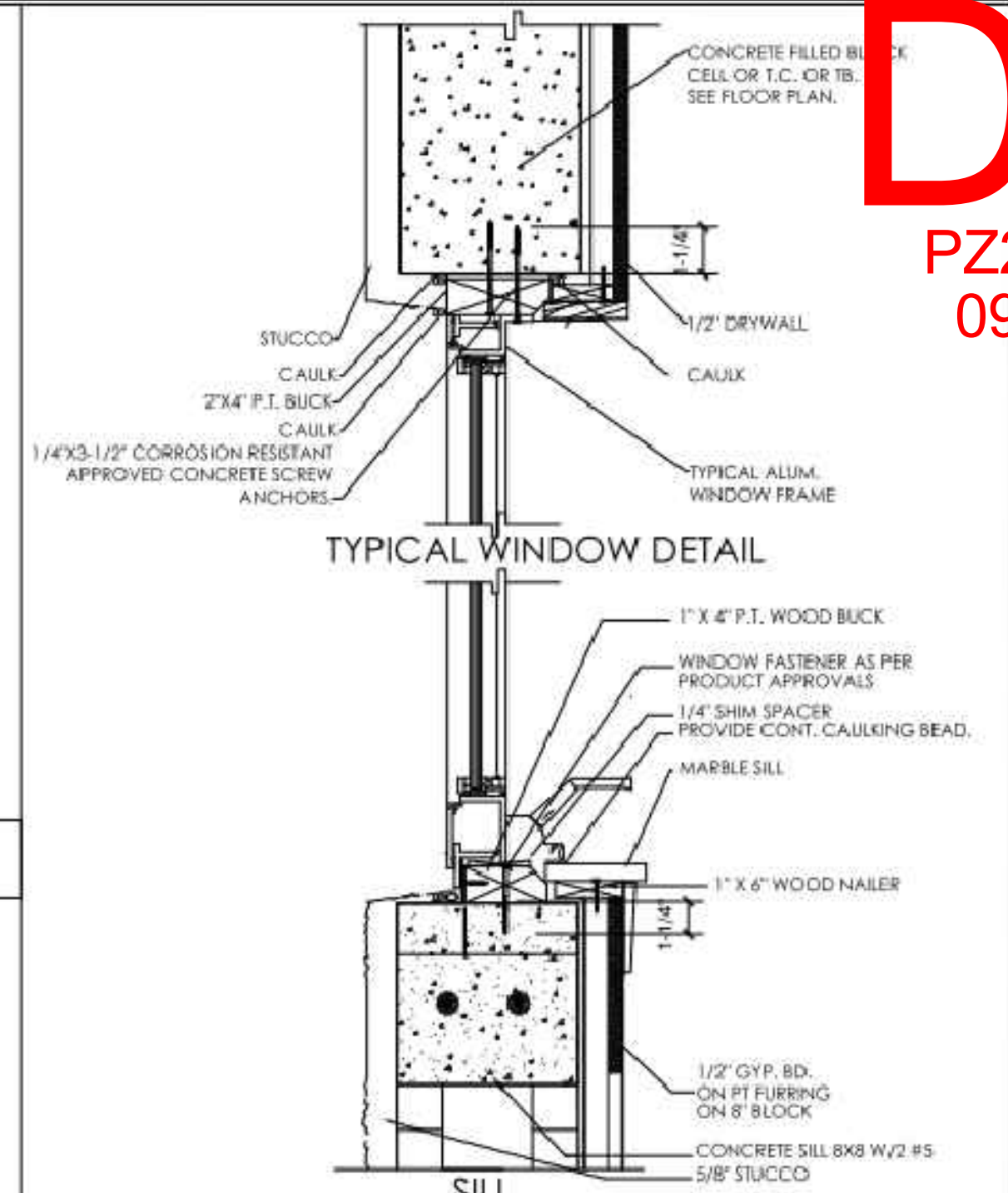
FLOOR FINISH SCHEDULE				
LEGEND	LABEL	LOCATION	DESCRIPTION	NOTES
	FF-01	KITCHEN, LIVING, DINING, BEDROOM	CERAMIC TILE	SEE FLOOR PLAN FINISH FOR LOCATIONS OF USE. INSTALL IN ACCORDANCE TO MANUFACTURER'S SPECIFICATIONS.
	FF-02	BATHROOMS	CERAMIC TILE	SEE FLOOR PLAN FINISH FOR LOCATIONS OF USE. INSTALL IN ACCORDANCE TO MANUFACTURER'S SPECIFICATIONS.
• ALL NEW SOUNDPROOF SHALL BE WHISPERMAT OR SIMILAR • ACOUSTICAL LINING TO COMPLY WITH FLORIDA BUILDING CODE 2017. • MINIMUM STC RATING PER FBC 2017 = 50 MUST BE PROVIDED.				



13 DOOR JAMB DETAIL
NTS



13 FRENCH DOOR DETAIL
NTS




- IF THE DESIGN PRESSURES IN THE WINDOW DOES NOT EXCEED 65 P.S.F., SECURE THE 2" WOOD BUCK TO THE STRUCTURE USING 1/4" X 3 1/4" CORROSION RESISTANCE APPROVED CONCRETE ANCHORS WITH A MINIMUM EMBEDMENT OF 1 1/4" @ 16" O.C. (6" FROM THE ENDS) ON 3000 P.S.I. CONCRETE AND @ 16" O.C. (6" FROM THE ENDS) ON ASTM C-90 CONCRETE BLOCKS OR SECURE THE WINDOW DIRECTLY TO THE STRUCTURE WITH 1/4"x3 1/4" CORROSION RESISTANT APPROVED CONCRETE ANCHORS WITH A MINIMUM EMBEDMENT OF 1 1/4" SPACED AS IT IS ON THE NOTICE OF ACCEPTANCE. A NOMINAL 1"x3" P.T. WOOD SPACER SHALL BE USED BETWEEN THE WINDOW AND THE STRUCTURE BUT THE EMBEDMENT IN THE CONCRETE BLOCK SHALL REMAIN TO BE 1 1/4" MIN.
- ALL 2"x WOOD BUCK END/OR 1"x3" WOOD SPACER SHALL BE PROPERLY CAULKED.
- REFER TO THE INSTALLATION INSTRUCTIONS FOR THE SPECIFIC PRODUCT BEING INSTALLED AND SHIM, LEVER, AND SQUARE TO ENSURE PROPER OPERATION.
- FILL VOID BETWEEN WINDOW AND WOOD BUCK WITH INSULATION, BEING CAREFUL NOT TO BOW WINDOW FRAME.
- APPLY A CONTINUOUS BEAD OF URETHANE SEALANT AROUND WINDOW. CHECK MANUFACT. RECOMMENDATIONS FOR SURFACE PREP, APPLICATION, AND INSTALLATION.

13 WINDOW AND DOOR BUCK DETAIL
NTS

KEYPLAN

Alioskar Ganem Osorio
Digitally signed by Alioskar Ganem Osorio
Date: 2024.06.14 11:38:02 -04'00'

CONSULTING ENGINEER

ALIOSKAR GANEM P.E.
FL LIC. No. 74745
ECO POMPANO TOWNHOME DEVELOPMENT

3225 NE 5TH ST. POMPANO BEACH, FL. 33062 UNIT 2

NOTES/COMMENTS

REVISIONS / SUBMISSIONS

DRAWN BY: AG
CHECKED BY: AG
INITIAL DRAWING RELEASE DATE: ISSUE DATE

DETAILS